



Söhner Kunststofftechnik GmbH

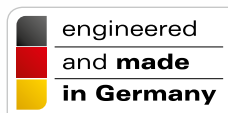
Industriestrasse 29 T +49 7138 812-200 info@soehner.de
74193 Schwaigern F +49 7138 812-520 www.soehner.de



We are committed to recycling. Help us in our efforts.

Our plastic packaging systems are made of uniform materials and can be completely recycled. We gladly take back used packages,

process them and use them as raw materials for producing new packages. This saves resources and the environment.



CONDUCTIVE PACKAGING

ESD PROTECTION



Avoidance of electrostatic discharge

Controlled release of electrostatic charges



Conductive packaging.

Static electricity can make you jump, and it's a problem for electronic components as well. We offer charge-free packaging to protect your products.

What is ESD?

And what problems does it cause?

Electrostatic discharge (ESD) is a spark or disruptive discharge that arises from a significant difference in potential in an electrically insulating material which generates a short, very high burst of voltage. Frequently, friction is the cause of the difference of potential which can arise when components are stored in plastic packaging.

Whereas humans are capable of sensing electricity at a level of approximately 2000 V, a discharge of voltage of less than 100 V is often enough to damage sensitive electrical, electronic and electromagnetic components. The energy of a static discharge in a semiconductor functions like the energy from lightning in a tree.

PROTECTIVE MEASURES

To protect electrostatic discharge-sensitive components (ESDS), Söhner Kunststofftechnik offers a wide spectrum of packaging solutions consisting of electrically conductive plastics. This prevents electrostatic charges from accumulating and discharges electricity in a controlled manner, which ensures safe storage and safe transport.



Colors

Conductive packaging is offered in black, grey and special colors upon request.

AVAILABLE MATERIALS: CONTROLLED ESD

The type of material plays a major role in the protection of components. Depending on how they are used, the required dimensions and load, we use electrically conductive and antistatic plastics: conductive ABS, conductive ABS/TPU, conductive HDPE, conductive PS, conductive PP, antistatic PET.

Product overview: The right packaging for your components.



Workpiece carriers



Blister packaging



Inserts



Containers

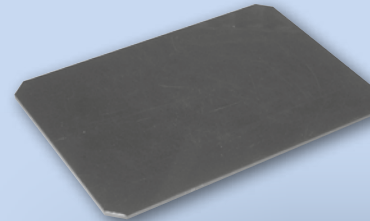
	Workpiece carriers	Blister packaging	Inserts	Containers
Description	Conductive workpiece carriers	Conductive blister packaging	Conductive inserts	Conductive containers
Material	Conductive ABS ABS/TPU HDPE PS	Conductive PS Antistatic PET	Conductive ABS ABS/TPU HDPE PS	Conductive ABS/TPU HDPE PS
Size	350 × 250 mm to 1200 × 1000 mm	Up to 700 × 500 mm	400 × 300 mm to 1200 × 1000 mm	340 × 340 mm to 1200 × 1000 mm



Pallet boxes



Compartments



Stamped panels



Special packaging

	Pallet boxes	Compartments	Stamped panels	Special packaging
Description	Conductive pallet boxes	Conductive compartments	Conductive stamped panels	Military grade conductive munitions case
Material	Conductive HDPE	Conductive PP Trilaminare	Conductive ABS/TPU HDPE PS PP	Conductive HDPE
Size	800 × 600 mm to 2400 × 800 mm	Upon request	Upon request	Upon request